

BRIEFING NOTES FOR D2421&L2275

Pay careful attention to page T4, T1.1 Tender notice and invitation to tender as the most important information is highlighted there. Note that an electronic AND hard copy must be submitted as requested in the tender notice.

Pay special attention to all the pages that contain this heading -

Failure to complete, sign and date this form or failure to acknowledge receipt of each Addendum issued or failure to return with the quotation submission a complete copy of each Addendum issued shall result in the quotation being considered non-responsive in terms of subclause F.3.8 of the Conditions of Tender and such a quotation shall be rejected.

. If this heading is displayed and a contractor feels that it is N/A and does not sign the page, the tender will be non responsive. The content may be marked as N/A if so applicable as is generally the case with Page T13 but the Bidder must still sign and date the required spaces as instructed. Please note initialling the bottom of the page is not seen as a signature it is simply acknowledging that the bidder has seen the page and is aware of what is in his/her document.

Page T15 must be completed in full. Pay special attention to the highlighted sections-

SUPPLIER COMPLIANCE STATUS	TAX COMPLIANCE SYSTEM PIN:	OR	CENTRAL SUPPLIER DATABASE No:	MAAA
B-BBEE STATUS LEVEL VERIFICATION CERTIFICATE	TICK APPLICABLE BOX) <input type="checkbox"/> Yes <input type="checkbox"/> No	B-BBEE STATUS LEVEL SWORN AFFIDAVIT	TICK APPLICABLE BOX) <input type="checkbox"/> Yes <input type="checkbox"/> No	
[A B-BBEE STATUS LEVEL VERIFICATION CERTIFICATE/ SWORN AFFIDAVIT (FOR EMES & QSEs) MUST BE SUBMITTED IN ORDER TO QUALIFY FOR PREFERENCE POINTS FOR B-BBEE]				
ARE YOU THE ACCREDITED REPRESENTATIVE IN SOUTH AFRICA FOR THE GOODS /SERVICES /WORKS OFFERED? (IF YES ENCLOSE PROOF)	<input type="checkbox"/> Yes <input type="checkbox"/> No	ARE YOU A FOREIGN BASED SUPPLIER FOR THE GOODS /SERVICES /WORKS OFFERED?	<input type="checkbox"/> Yes <input type="checkbox"/> No (IF YES, ANSWER PART B.3)	

Are you a foreign based supplier – This answer should generally be **No** and the bottom section(**QUESTIONNAIRE TO BIDDING FOREIGN SUPPLIERS.**) does not need to be completed as the contractor has already indicated that he is not a foreign based supplier.

T16 must be completed and signed thus accepting the terms for bidding.

SBD 4, 8 and 9 are extremely important and failing to answer all the questions as required also lead to a bidders offer being seen as non responsive. This has occurred on numerous occasions.

SBD 6.1 Note 6.1 must be completed to claim BBBEE Points. It should be completed as follows:
B-BBEE Status Level of Contributor: 1 (What BBBEE level) = ...20 (Correlating points to level – see table 4.1) (maximum of 20 points)

SBD 6.2 is not applicable to the Contract.

Returnable D – T36 – Generally the simplest and most frequent submission is a Sworn Affidavit. It should be noted that an affidavit must be an original that is certified by a commissioner of oaths. If a copy is submitted the contractor will not be awarded any preferential points and therefore lose out on 20 points. On the Affidavit one question is regarding the financial year for which the affidavit is done. This must be the latest financial year and not older than 12 months from date of closing of the bid, but also this time cannot be in the future, eg. February 2022. All provisions for disclosing information under Oath must be complied with to ensure the affidavit is acceptable. For BBBEE certificate – these must be submitted as a copy – no need of certification.

Returnable E on page T37 must be completed and signed by all members/directors. If one of the members/directors fails to sign it is seen as a non responsive document due to the directors/members not being aware of the tender submission.

Returnable G T39 must be completed and have CV's attached as is indicated at the top of the Page. G2 has been redacted and it is not necessary to complete this section.

Returnable J – T45 Must be signed, dated and completed as indicated on the bottom of page T45. Please follow the instructions on page T44 on how to calculate the minimum labour percentage and note that the specified minimum labour percentage is 6% as indicated.

Returnable K – T46 Must be completed correctly and signed. This should be read and completed accordingly. Question 3 has three sub headings. Generally the contractor will answer yes to only one of these. The corresponding number in question 4 must then also be completed. Example – If 3(a) is answered yes then the contractor must answer 4(a) aswell, If 3(b) then 4(b) ect ect.

Lastly it is extremely important to ensure that all pages are initialed and checked before submitting the document.

Page C3 as the form of offer must be signed and the amount in words must be completed failure to do this will invalidate the tender.

Please check that the amount on C3(For of Offer) and C39(BOQ Summary) match.

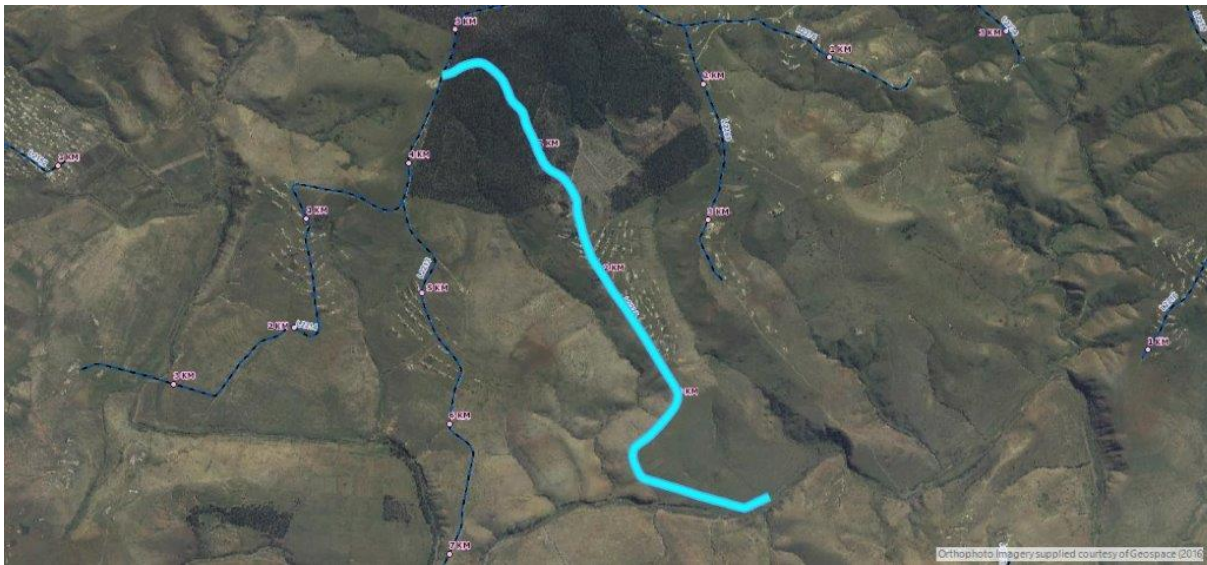
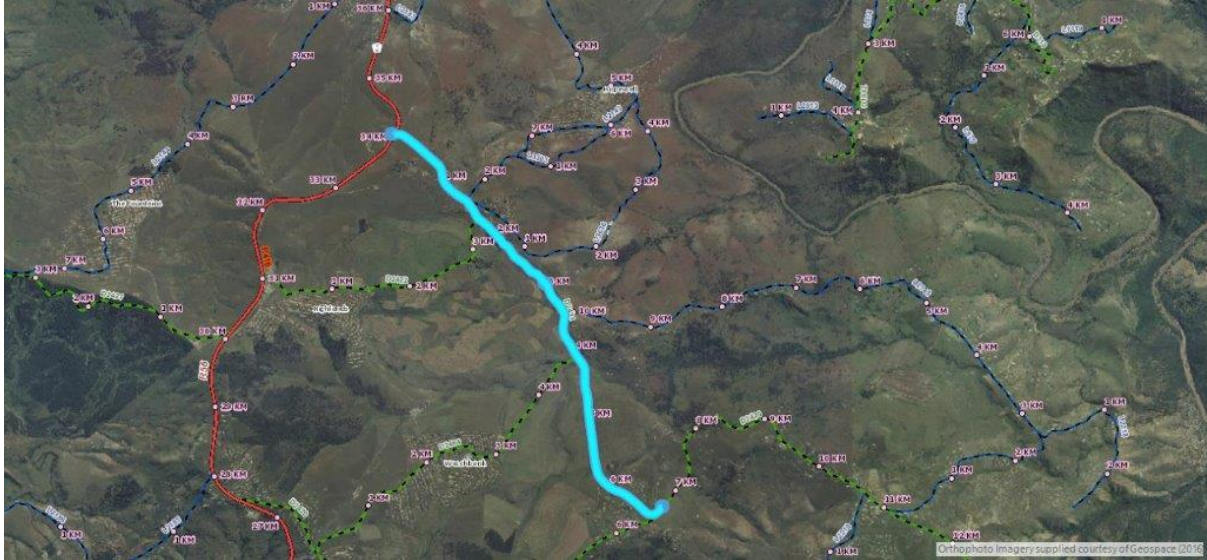
On a contractual note the following must be mentioned:

The construction period is 5 months and failure to complete the project within the specified timeframe will result in penalties. It is of extreme importance that these risk be factored into the pricing of the documents as the bidders price is also compared to realistic estimate that has been completed by a third party to see if the quoted price is reasonable.

C4.1 LOCALITY PLAN

District Road D2421 and L2275 are located in KZN435 within DC 43, where the start of the project is on P416 and traverses South. District road D2421 and L2275 can be seen indicated in blue in **Figure C4.1**

Figure C4.1 – Locality Plan of District Road D2421 and L2275



The approximate limits of construction can be seen in **Table C4.1**.

Table C4.1 – Approximate project limit of construction co-ordinates

Km	Latitude	Longitude
Km 0.000	30.31797°S	29.94326°E
Km 3.000	30.33760°S	29.96289°E
Km 0.000	30.40362°S	29.93532°E
Km 4.502	30.43080°S	29.95620°E

Borrow Pit	30.293665°S	29.93935°E
-------------------	--------------------	-------------------

PROJECT BACKGROUND

WARDS: 15 and 20

TRIBAL COUNCIL: Fodo

FACILITIES AND SERVICES ALONG THE ROAD: Only Harry Gwala water pipeline is a service along both roads.

TERRAIN: Flat

CONDITION OF THE CURRANT GRAVEL ON THE ROAD: There's severe loss of gravel due to the age of the road particularly in some sections.

ROUTE TO THE QUARRY: P416 is a rout to the quarry and is approximately 7km from the beginning of proposed sections to be re-gravelled in both roads.

Location of quarry and average distance to quarry for each road: The Quarry is located along P416 km 37.

Please see the photos below for some images of the roads condition and the borrow pit: The Quarry is Grey Shale.